

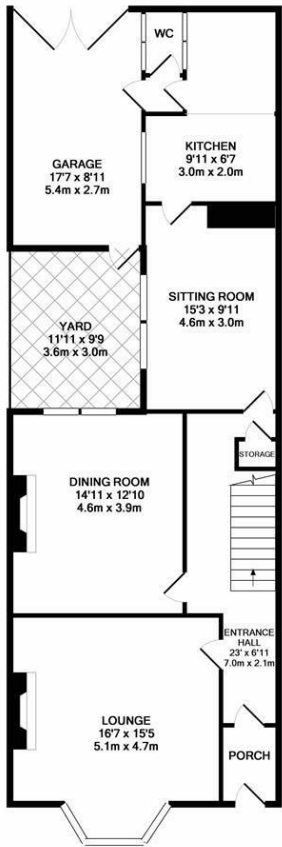




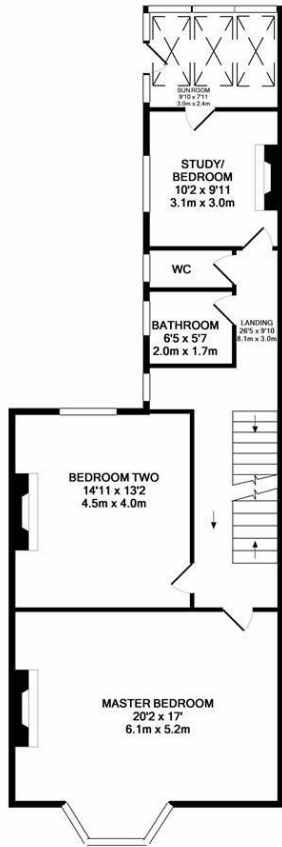
WELL PRESENTED with PERIOD FEATURES THROUGHOUT and NO ONWARD CHAIN! This purpose built, three-storey period mid terrace is located on Devonshire Place, Jesmond. Devonshire Place is well placed to give access to excellent local schooling, Jesmond Dene, the shops, cafés and restaurants of Jesmond as well as good transport links into Newcastle City Centre and beyond with both Jesmond and West Jesmond Metro Stations both only a short walk away.

Boasting almost 2500 Sq ft of internal living accommodation, the property briefly comprises: entrance lobby through to entrance hall with painted wood flooring and stairs to the first floor; 16ft lounge with period fireplace and walk-in bay; dining room with feature fireplace and painted wood flooring; sitting room to the rear with access to the kitchen; kitchen with fitted units, work surfaces, access to w/c and a door leading to the garage. The first floor landing gives access to an impressive 20ft full-width bedroom with feature fireplace, painted wood flooring, walk in bay and separate window, both with stained glasswork; bedroom two with painted wood flooring and feature fireplace; study/bedroom three; family bathroom and separate w/c. The staircase continues to the second floor with two further bedrooms, bedroom three with dormer window, access to a storage cupboard and both bedrooms with feature fireplaces. There is also eaves storage to the rear of the property, accessed via the staircase. Externally, a south facing yard to the rear with access to a 17ft garage/covered parking area with doors leading to the rear access. With an abundance of period features, this is a great opportunity not to be missed!

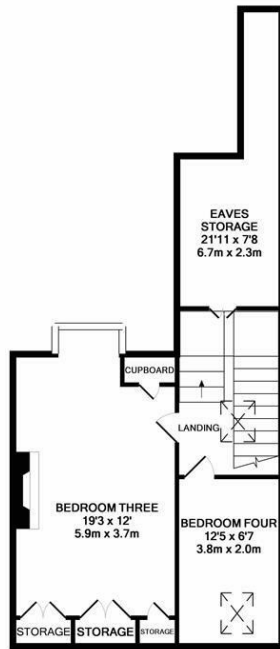
Three Storey Victorian Terrace | 2484 Sq ft (230.8 m2) | Full Refurbishment Required & Priced to Reflect This | Four Bedrooms | Study | Kitchen | Three Receptions | 20ft Full-Width Bedroom | Bathroom | Rear Yard | Garage | Excellent Location | Freehold | EPC Rating: E



GROUND FLOOR  
APPROX. FLOOR  
AREA 1037 SQ.FT.  
(96.3 SQ.M.)



1ST FLOOR  
APPROX. FLOOR  
AREA 872 SQ.FT.  
(81.1 SQ.M.)



2ND FLOOR  
APPROX. FLOOR  
AREA 575 SQ.FT.  
(53.4 SQ.M.)

TOTAL APPROX. FLOOR AREA 2484 SQ.FT. (230.8 SQ.M.)  
Whilst every attempt has been made to ensure the accuracy of the floor plan contained here, measurements of doors, windows, rooms and any other items are approximate and no responsibility is taken for any error, omission, or mis-statement. This plan is for illustrative purposes only and should be used as such by any prospective purchaser. The services, systems and appliances shown have not been tested and no guarantee is given as to their operability or efficiency can be given.  
Made with Metropix iC2018.



Offers Over £395,000

IMPORTANT NOTE: These particulars and the descriptions and measurements herein do not constitute representation and whilst every effort has been made to ensure accuracy, this cannot be guaranteed.

